

Very Close to Perfect Solutions Against Power Attacks

Jean-Max Dutertre (ENSMSE), Amir-Pasha Mirbaha (ENSMSE),
David Naccache (ENS), Assia Tria (CEA LETI)

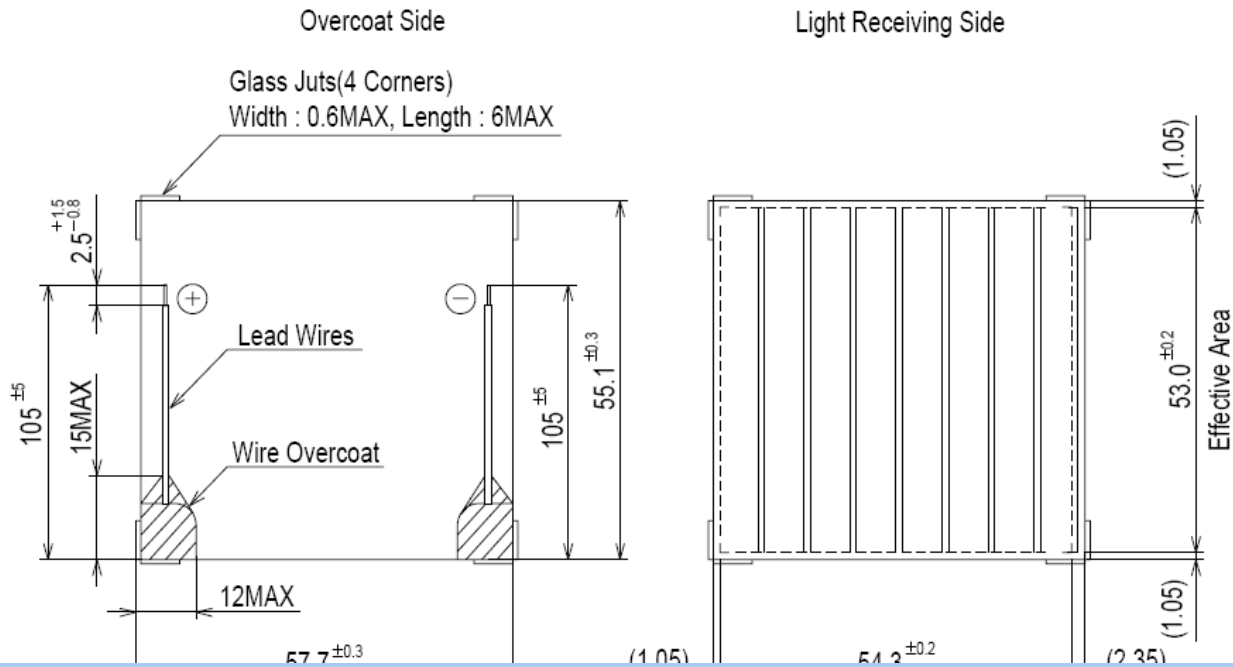


DATA SHEET
SANYO Amorphous Solar Cell

Amorton

AM-8801

Package Dimensions (unit : mm)



ORBEOS™ for OLED Lighting Lead (Pb) Free Product - RoHS Compliant

CDW-031

Vorläufige Daten / Preliminary Data



Besondere Merkmale

- **Format:** Lichtkachel
- **Besonderheit des Bauteils:** blendfreie homogene Flächen-Lichtquelle, außergewöhnlich dünn (2.1 mm), schnelle Schaltzeiten, hohe Lichtqualität, sehr gute Farbwiedergabe, enthält kein Quecksilber
- **Farbe:** warm weiß
- **Emissionsfläche:** ø79.00 mm
- **Aussenabmessung:** siehe Maßzeichnung

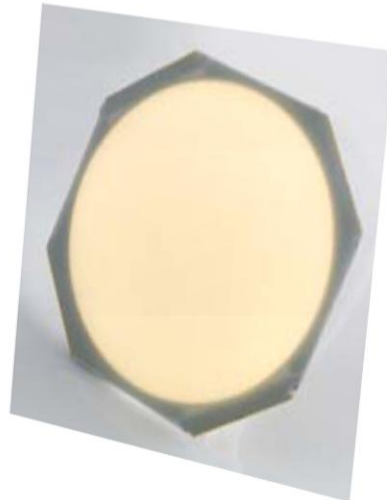
Features

- **format:** lighting tile
- **feature of the device:** non glaring uniform area light source, exceptionally thin (2.1 mm), instant on/off, high quality of light, very good colour rendering, mercury-free
- **color:** warm white
- **light output area:** ø79.00 mm
- **glass size:** refer to product drawing
- **interconnect:** 4 contact ledges

ORBEOS™ for OLED Lighting
Lead (Pb) Free Product - RoHS Compliant

CDW-031

Vorläufige Daten / Preliminary Data



Besondere Merkmale

- **Format:** Lichtkachel
- **Besonderheit des Bauteils:** blendfreie homogene Flächen-Lichtquelle, außergewöhnlich dünn (2.1 mm), schnelle Schaltzeiten, hohe Lichtqualität, sehr gute Farbwiedergabe, enthält kein Quecksilber
- **Farbe:** warm weiß
- **Emissionsfläche:** ø79.00 mm
- **Aussenabmessung:** siehe Maßzeichnung

Features

- **format:** lighting tile
- **feature of the device:** non glaring uniform area light source, exceptionally thin (2.1 mm), instant on/off, high quality of light, very good colour rendering, mercury-free
- **color:** warm white
- **light output area:** ø79.00 mm
- **glass size:** refer to product drawing
- **interconnect:** 4 contact ledges

ORBEOS™ for OLED Lighting
Lead (Pb) Free Product - RoHS Compliant

CDW-031

Vorläufige Daten / Preliminary Data



What if we stack them?

Besondere Merkmale

- **Format:** Lichtkachel
- **Besonderheit des Bauteils:** blendfreie homogene Flächen-Lichtquelle, außergewöhnlich dünn (2.1 mm), schnelle Schaltzeiten, hohe Lichtqualität, sehr gute Farbwiedergabe, enthält kein Quecksilber
- **Farbe:** warm weiß
- **Emissionsfläche:** ø79.00 mm
- **Aussenabmessung:** siehe Maßzeichnung

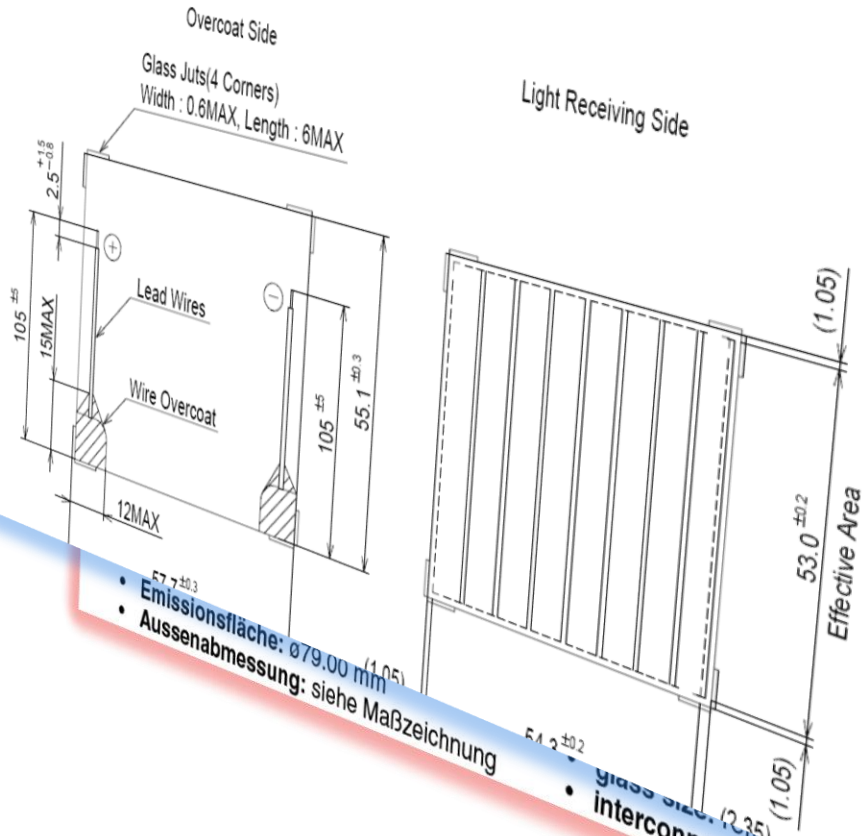
Features

- **format:** lighting tile
- **feature of the device:** non glaring uniform area light source, exceptionally thin (2.1 mm), instant on/off, high quality of light, very good colour rendering, mercury-free
- **color:** warm white
- **light output area:** ø79.00 mm
- **glass size:** refer to product drawing
- **interconnect:** 4 contact ledges

AM-8801

Amorton

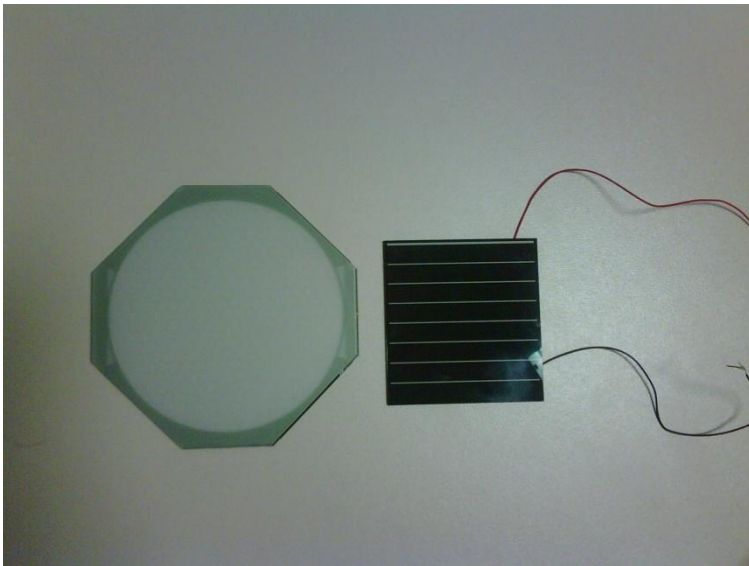
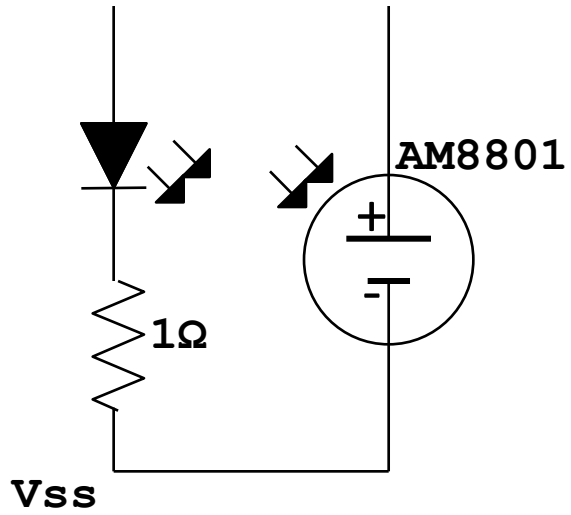
Package Dimensions (unit : mm)



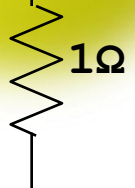
- Emissionsfläche: 57 ± 0.3 (1.05)
- Aussenabmessung: 109.00 mm (1.05)
- Aussenabmessung: siehe Maßzeichnung

- glass size: (2.35)
- interconnect: 4 contact ledges

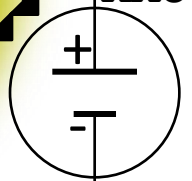
orm area
, instant
colour



V_{in}



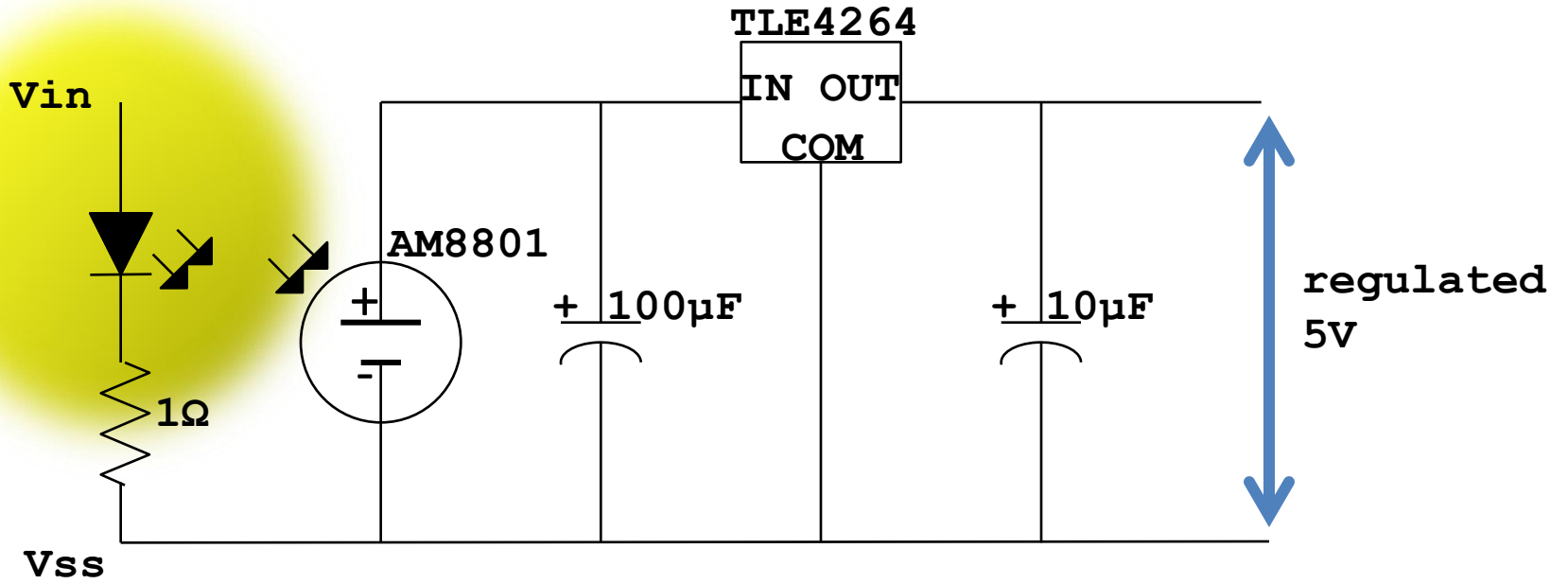
V_{ss}

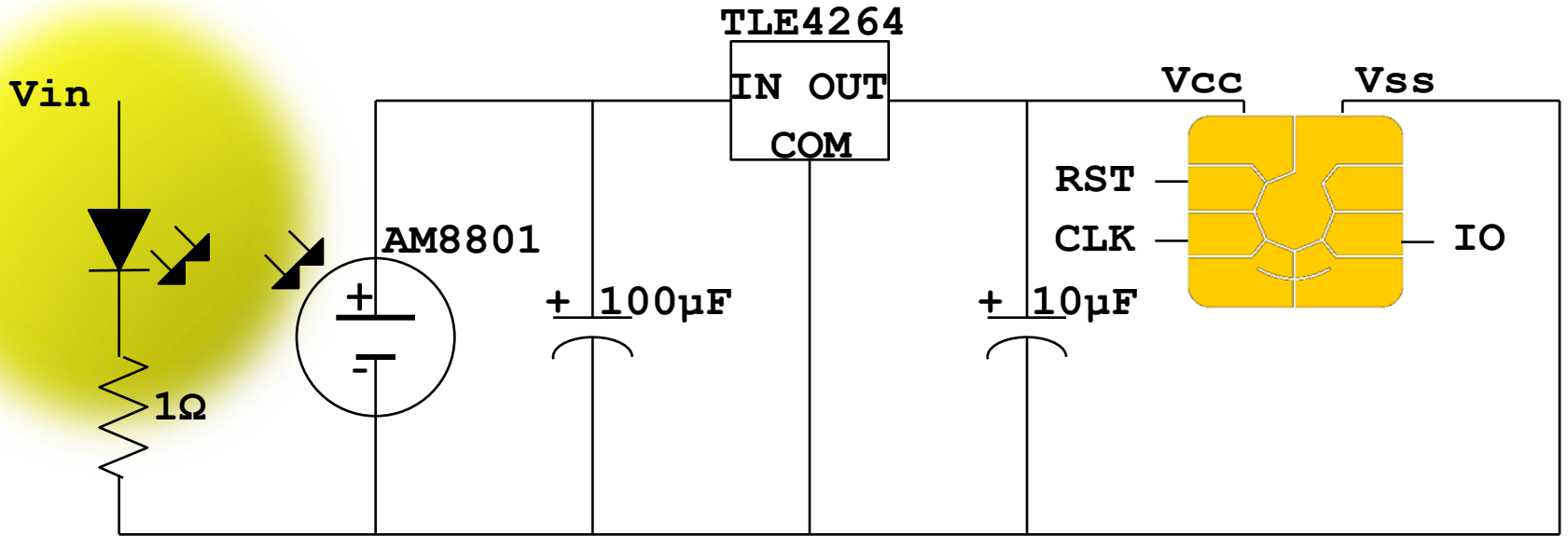


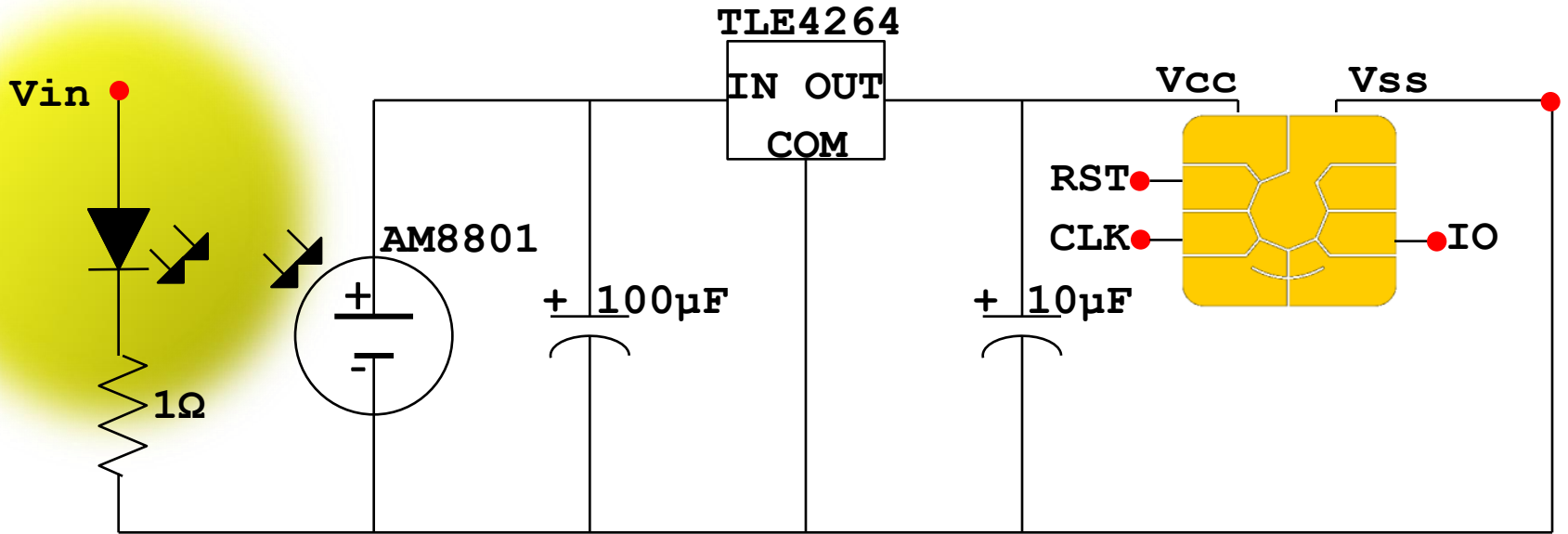
AM8801



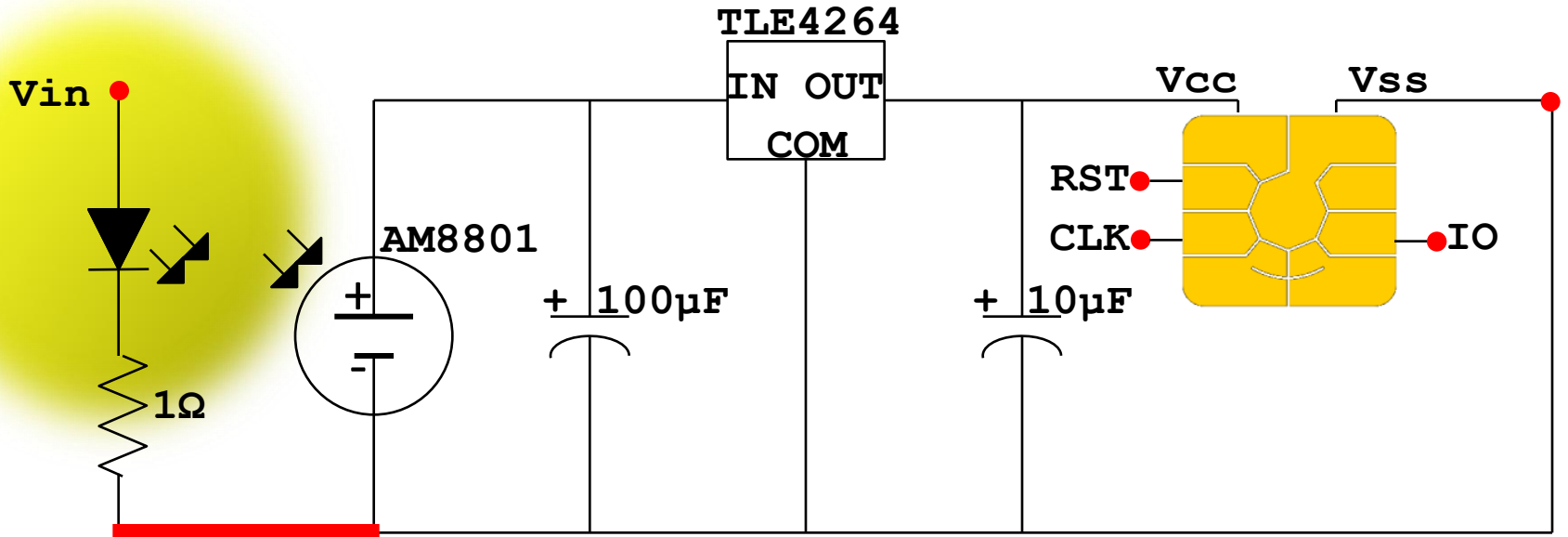
voltage



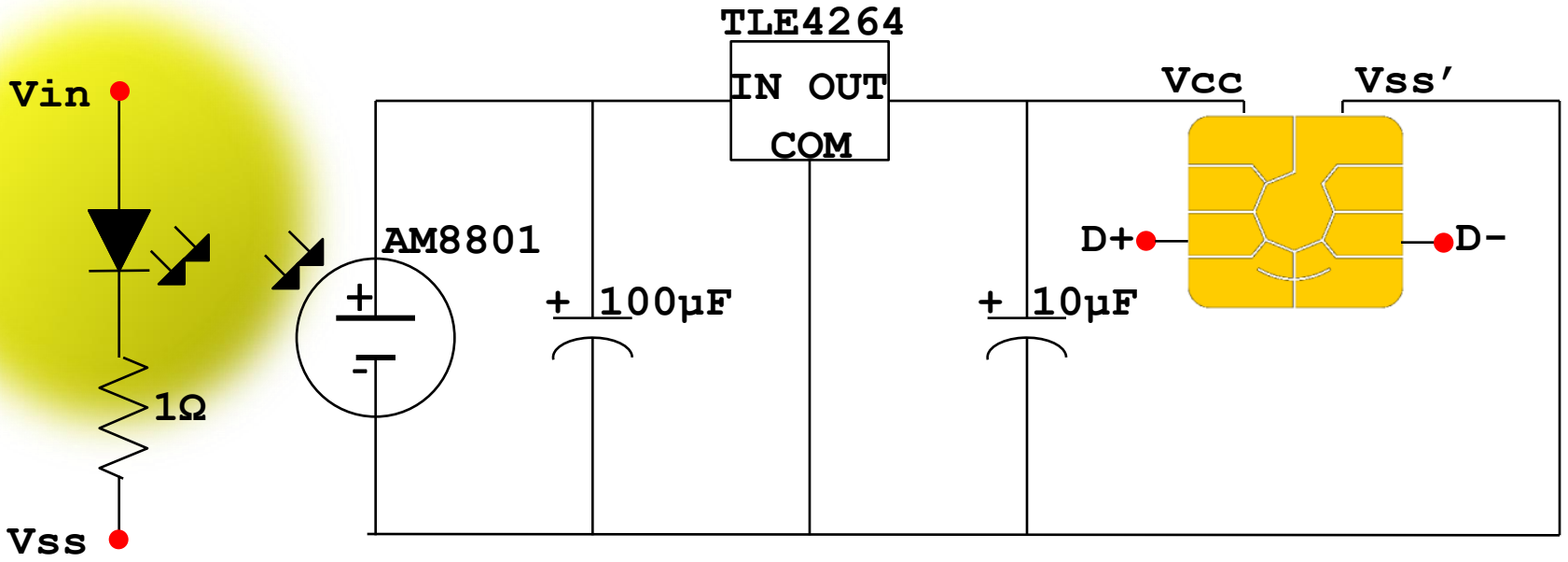




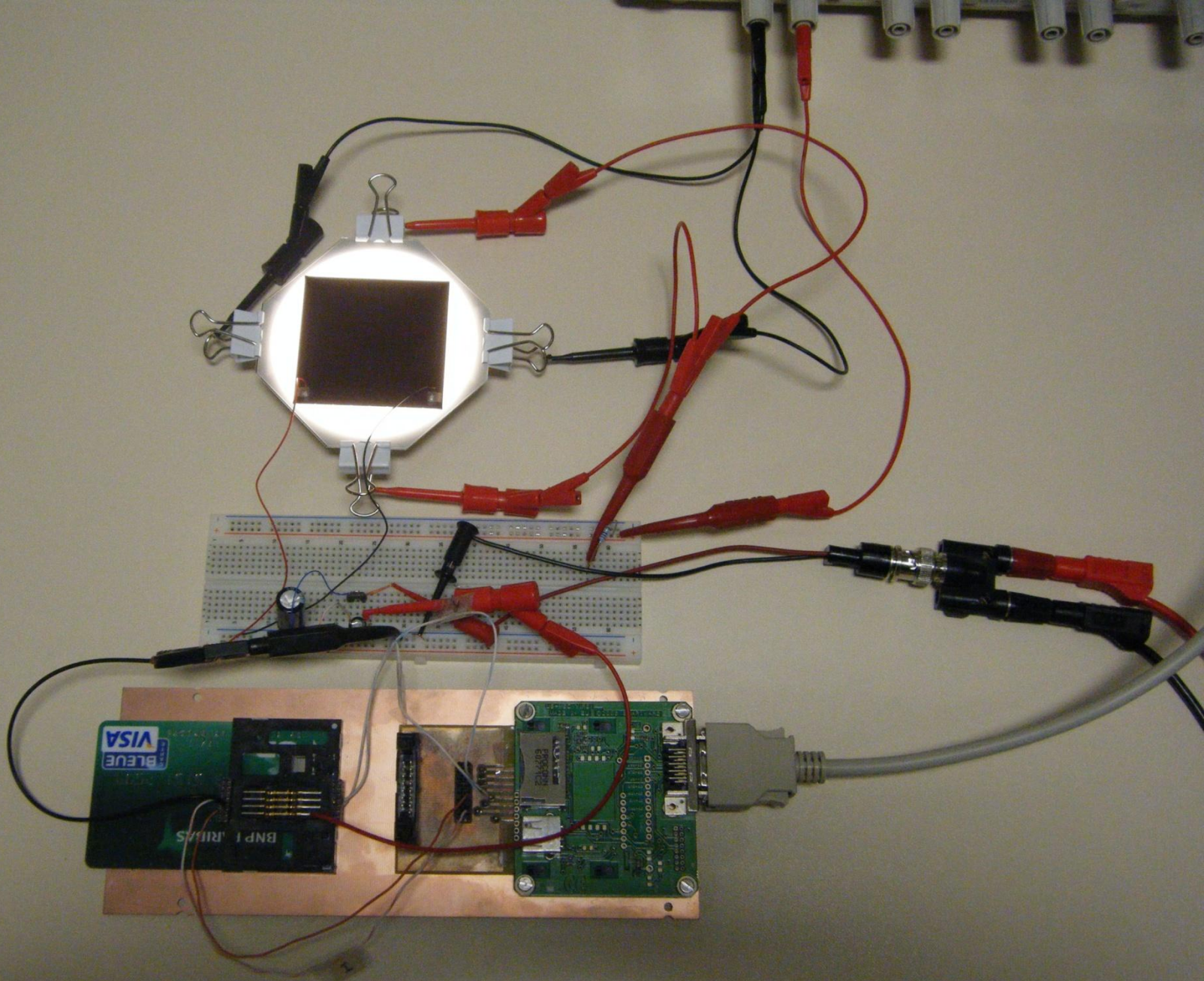
● = to the smart card reader



Issue!

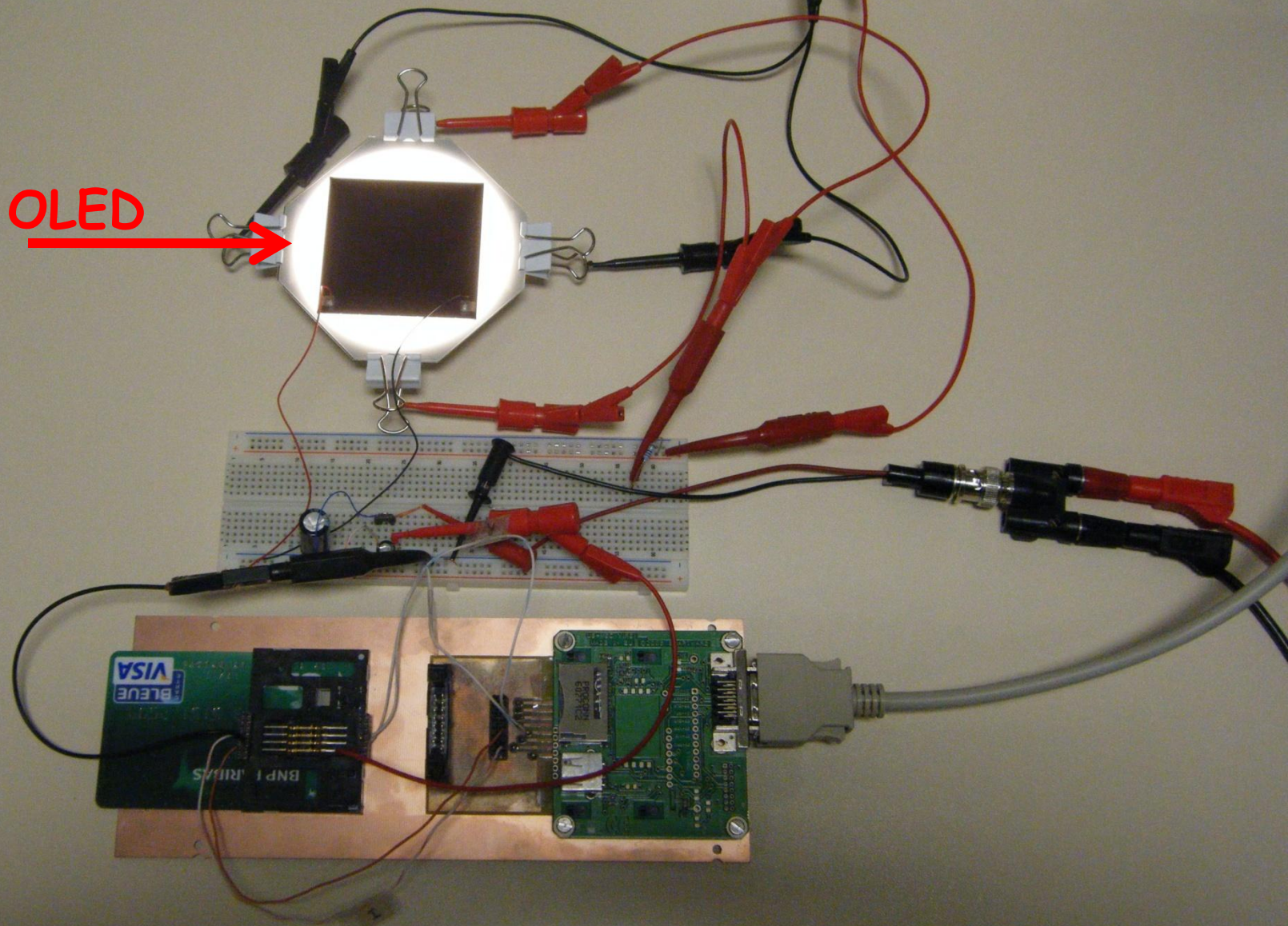


Solution

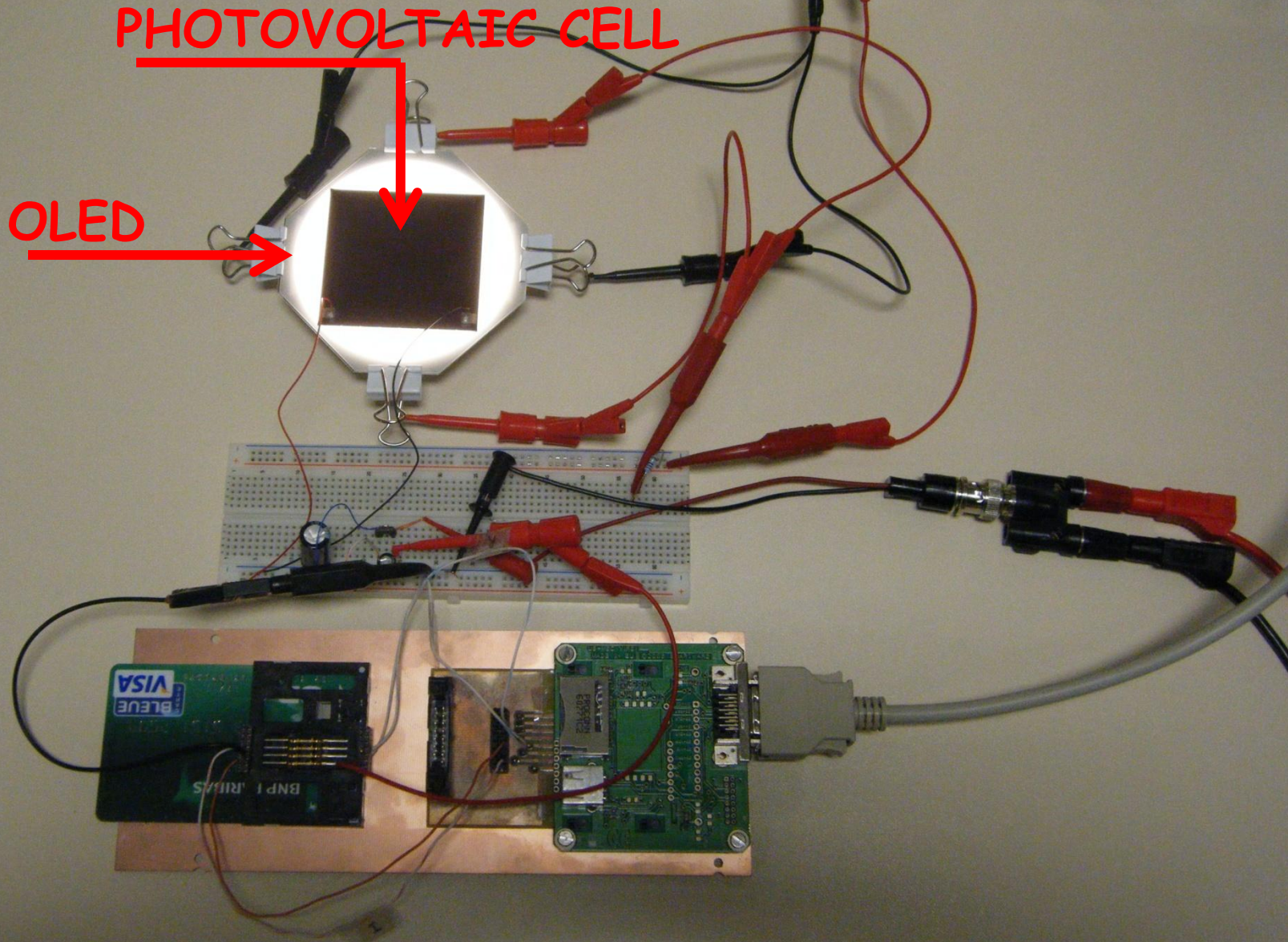


THE PROTECTED SYSTEM

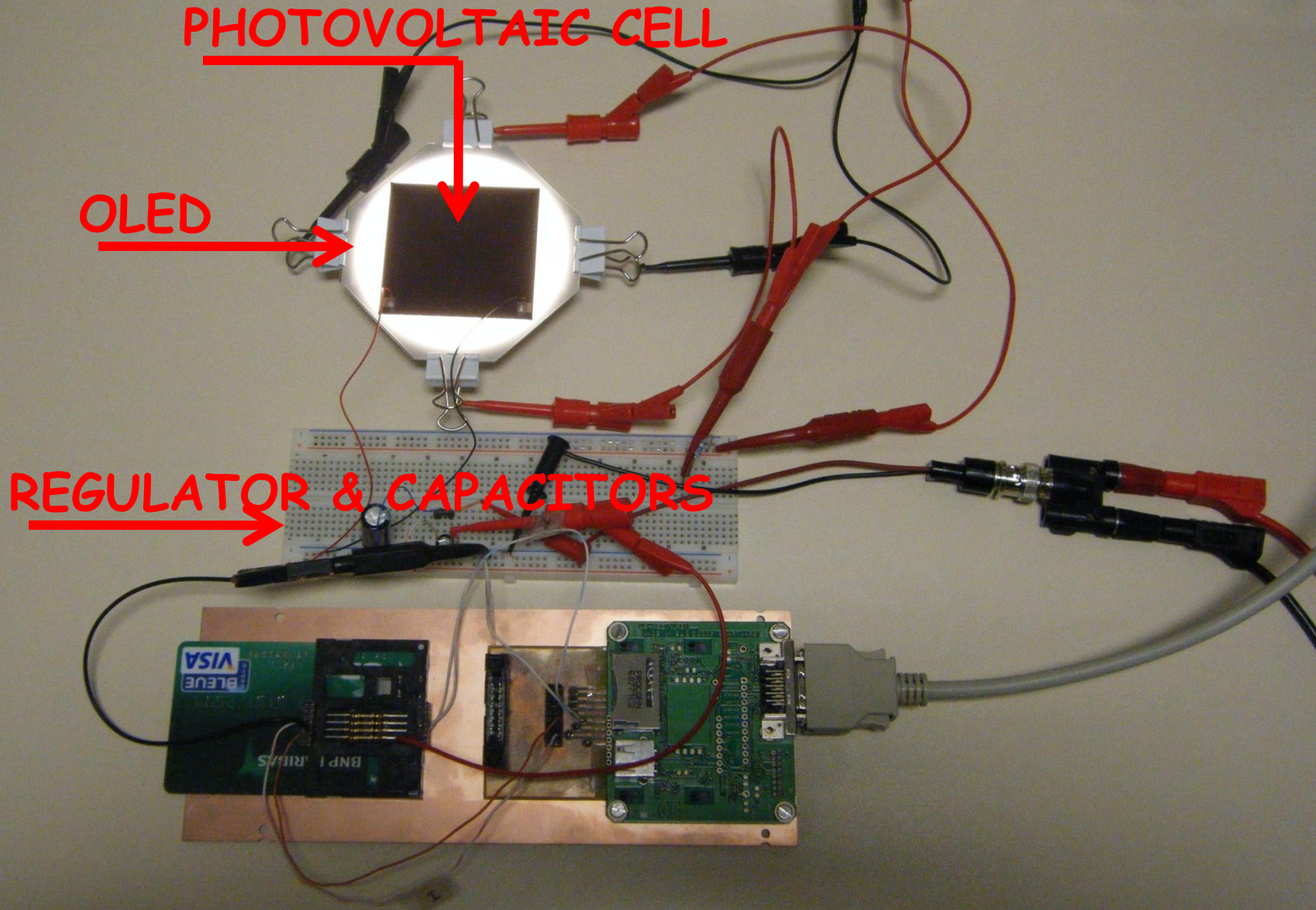
OLED



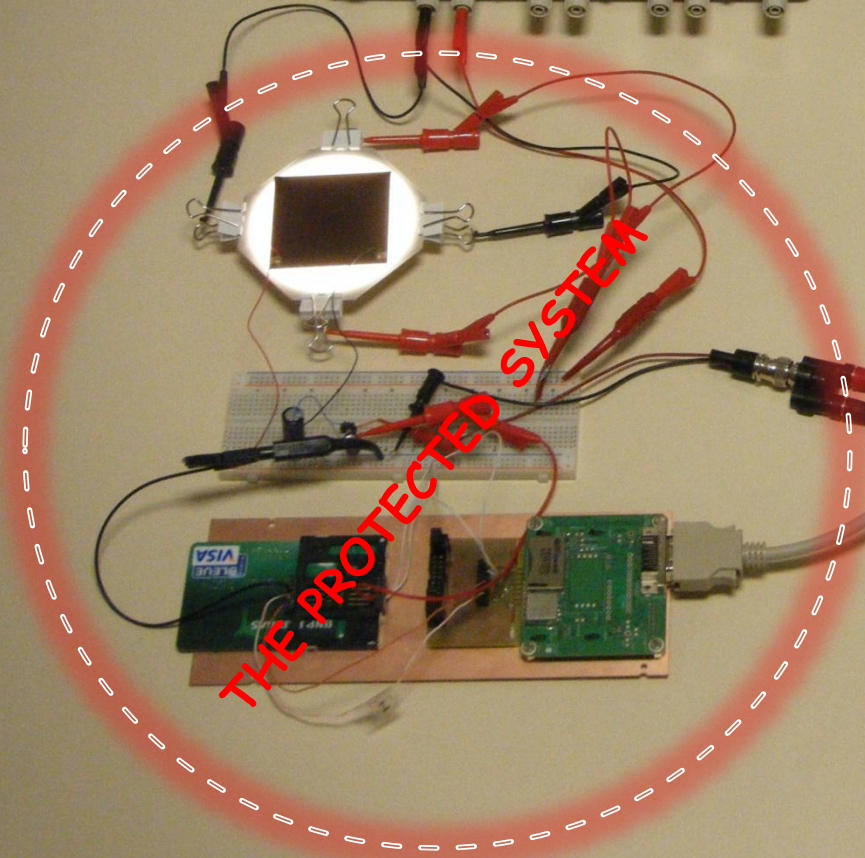
THE PROTECTED SYSTEM

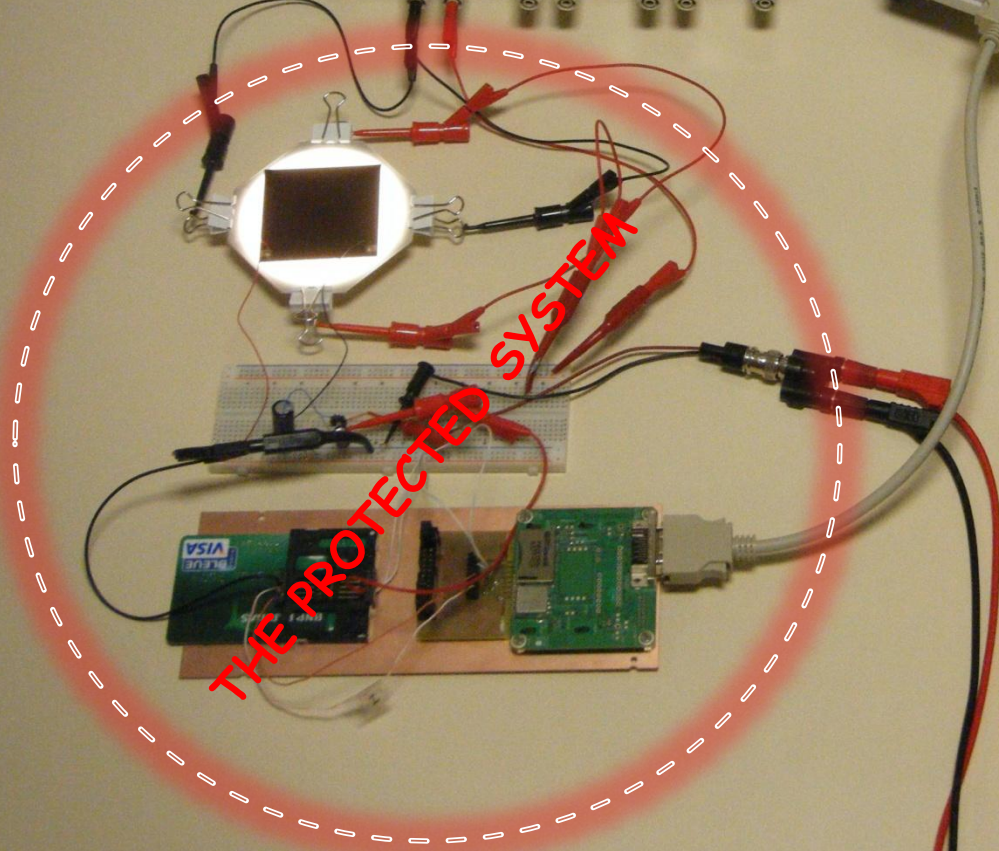


THE PROTECTED SYSTEM



THE PROTECTED SYSTEM





THE PROTECTED SYSTEM

THE ATTACKER



(Conceptual) Advantage

- Whatever is used is converted to heat.
- Whatever isn't is converted to heat.
- **The device's power consumption is flat.**

(Conceptual) Advantage

- Whatever is used is converted to heat.
- Whatever isn't is converted to heat.
- **The device's power consumption is flat.**

(Non conceptual) Limitations

- Excessive heat dissipation
- Solves power attacks not EMA
- Power consumption is multiplied by 8.
- In theory wires might act as antennae and conduct a negligible EMA residue \Rightarrow “*very close to perfect*”

**Come and see the
demo by Amir!**